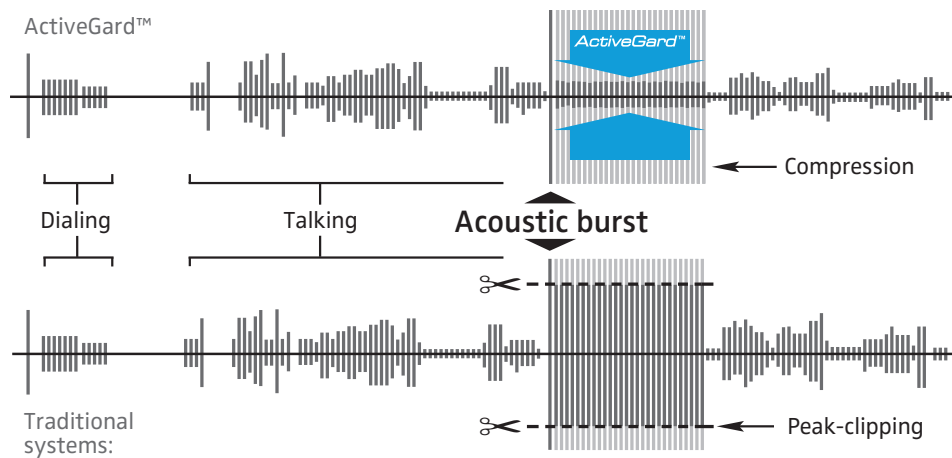


ActiveGard™

ActiveGard™ is an active system, which automatically compresses an incoming sound that is too loud. As opposed to cutting the volume signal off, it actually compresses the incoming signal to a safe level without distorting it. It also reacts in just a few milliseconds, which is much faster than the human ear can even recognize.

Traditional systems work by simply clipping high-volume peaks. This, in turn, can create severe, increasing, and uncomfortable distortion during a phone call. Since the potentially dangerous energy of the volume signal is only reduced and not removed, the headset speakers are still likely to transmit a very high, unpleasant, and maybe even unsafe sound level.



Technical data

Transmission data

Microphone	Noise Canceling
Frequency response	100 Hz – 3400 Hz
Sensitivity	-34 dB
Distortion	Less than 1%

Receiving data

Impedance.....	300 Ω
Frequency response	300 Hz – 3400 Hz
Sound pressure max	104 dB SPL limited by ActiveGard™
Distortion	Less than 1%

Weight of headset.....	29 g / 0.67 oz
Wearing style	Over-the-ear (left or right ear)
Personal fit.....	3 adjustment speaker rings
Cable length.....	1 m / 3.3 ft Kevlar® reinforced
Connector	Easy Disconnect
Ear-cap size.....	Regular ø 20 mm / 0.78 inch

Accessories included

Carry bag, headset storage hook, clothing clip and microphone windscreen.

Safety instructions

- Avoid listening at high volume levels for long periods since this leads to permanent hearing defects.
- Keep children away from the SH 300. When playing, children can be strangled by the cables.
- Do not use the SH 300 in a damp or dusty environment.

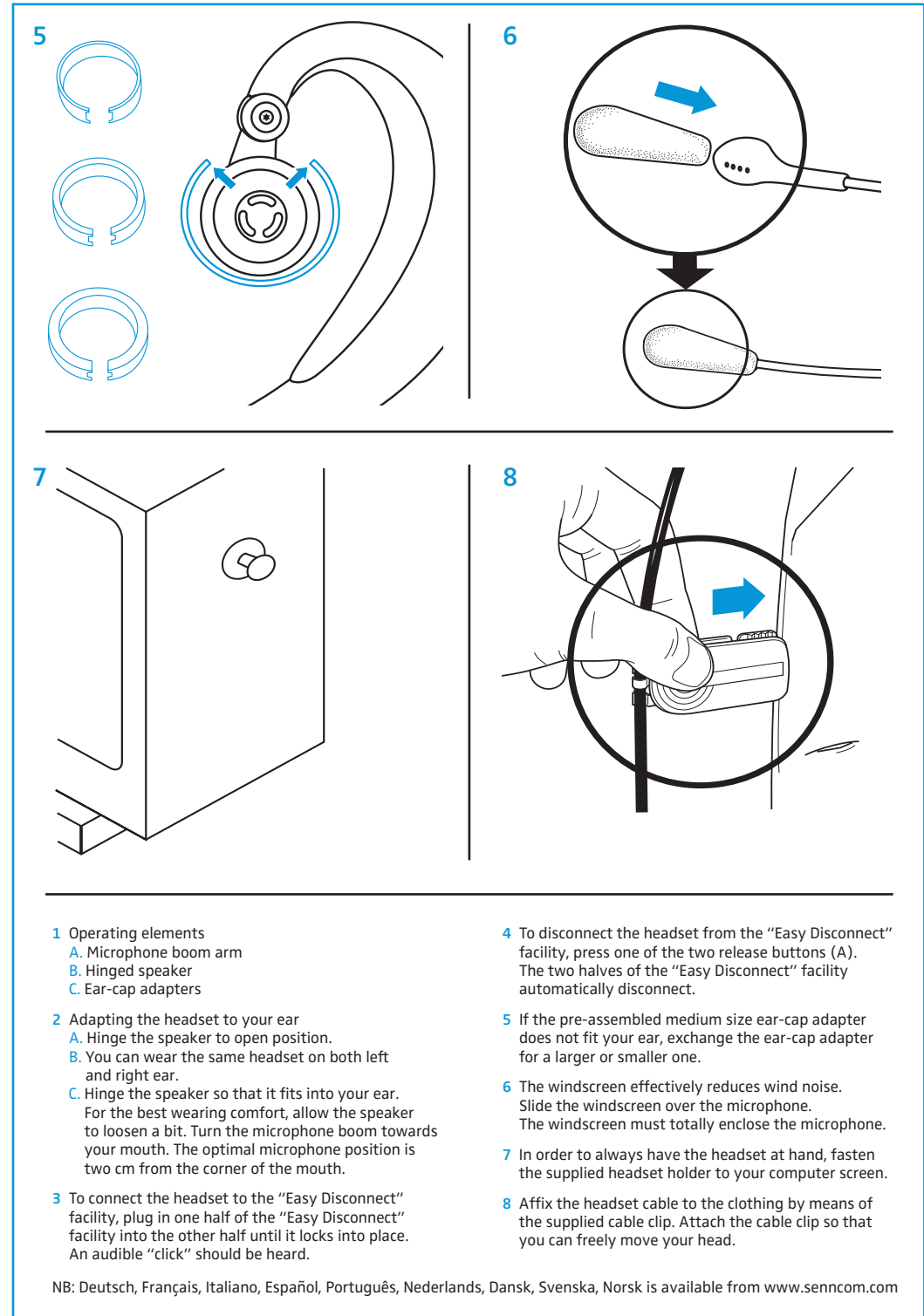
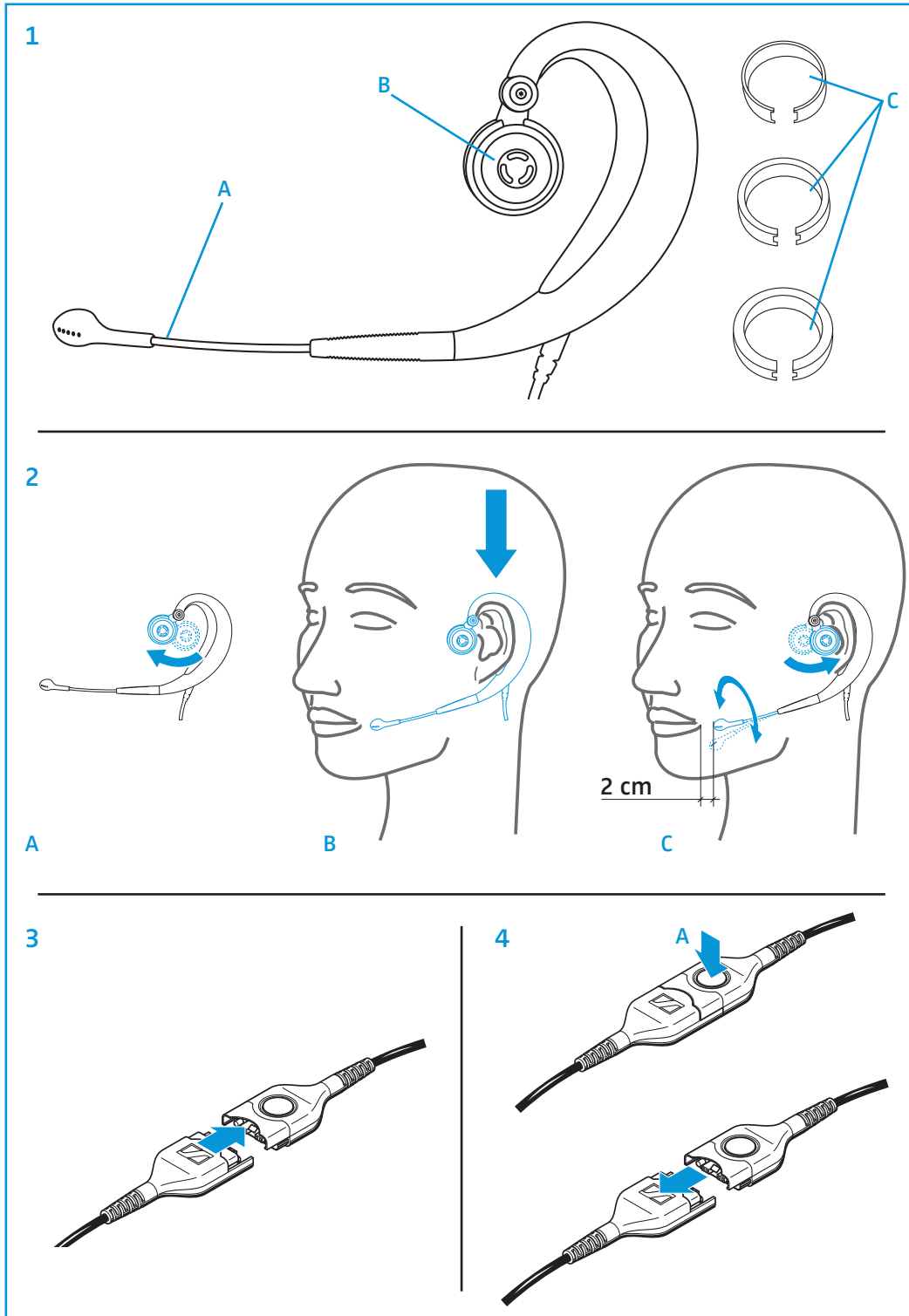
www.senncom.com

SENNHEISER
COMMUNICATIONS

515598-10-00-02-072007

SH 300
User
Manual

SENNHEISER
COMMUNICATIONS



1 Operating elements

- A. Microphone boom arm
- B. Hinged speaker
- C. Ear-cap adapters

2 Adapting the headset to your ear

- A. Hinge the speaker to open position.
- B. You can wear the same headset on both left and right ear.
- C. Hinge the speaker so that it fits into your ear. For the best wearing comfort, allow the speaker to loosen a bit. Turn the microphone boom towards your mouth. The optimal microphone position is two cm from the corner of the mouth.

3 To connect the headset to the "Easy Disconnect" facility, plug in one half of the "Easy Disconnect" facility into the other half until it locks into place. An audible "click" should be heard.

4 To disconnect the headset from the "Easy Disconnect" facility, press one of the two release buttons (A). The two halves of the "Easy Disconnect" facility automatically disconnect.

- 5** If the pre-assembled medium size ear-cap adapter does not fit your ear, exchange the ear-cap adapter for a larger or smaller one.
- 6** The windscreen effectively reduces wind noise. Slide the windscreen over the microphone. The windscreen must totally enclose the microphone.
- 7** In order to always have the headset at hand, fasten the supplied headset holder to your computer screen.
- 8** Affix the headset cable to the clothing by means of the supplied cable clip. Attach the cable clip so that you can freely move your head.

NB: Deutsch, Français, Italiano, Español, Português, Nederlands, Dansk, Svenska, Norsk is available from www.senncom.com